



COCO COIR BASED GROWING MEDIA & SUBSTRATES

Make it



**Grow**

Award-winning  
growing media

Coco Coir  
certified, sustainable, versatile

PRODUCT OVERVIEW  
COIR & SUBSTRATES



## Sivanthi – more than 30 years of experience

Sivanthi is the leading producer of Coco Coir base growing Media and Substrates with an annual production capacity of more than 500,000 cubic meters. With our production facility that covers 200 ha (500 acres) and over 500 employees who condition, process, produce and manage the Coir, we offer a wide range of Coir and Substrates, available as standard mixtures or according to our customers' requests.

- **First** Coir company outside of the Netherlands to receive its own RHP certification for coir products.
- **First** Coir company outside of the Europe to receive its own RHP certification on End products, RHP Growing media Substrates.
- **First** Coir company in the World to be awarded with the RAL quality mark "Substrate für Pflanzen" for coir products by GGS-Gütegemeinschaft Substrate für Pflanzen e.V. in Germany.
- **First** Coir company in India to obtain the **IMO Control** Certification of Coir Pith for using organic coir Organic Coco Peat according to

- **NPOP** (National programme for Organic Production) (Indian Organic Standard)
  - **EU regulation (EC) No 834/2007** and **889/2008** (European Organic Standard)
  - **COR** (Canada Organic Regime) Canada Organic Standard
- Certified by IMO Control, India part of the renowned IMO group in Switzerland.

- **Sivanthi Organic** Coco Coir product is **OMRI Listed**. It may be used in certified organic production or food processing and handling according to the USDA National Organic Program Rule
- **First** Coir company in India to be **SA 8000-2014** certified by the British Standards Institution (BSI).
- **Sivanthi** is certified with quality management system **ISO 9001-2015** standard from British Standards Institution (BSI)
- **First** Coir Company in India to be **ISO 45001-2018** certified by the British Standards Institution (BSI)



The yearly coconut harvest gives a theoretic potential of more than 60 million m<sup>3</sup> of coir. This is more than the yearly usage of growing media of about 43 million m<sup>3</sup> worldwide. Actually, only 10% of the potential is used.

Coco pith makes up 2/3 of a coconut husk; 1/3 is coco fiber.



*Crops grown using coco growing medium can be cultivated longer. Coir decomposes very slowly; it takes more than 10 years.*



## Carefully treated coir for optimal growth & healthy plants

Only carefully treated coir is a guarantee for optimal growth and healthy plants. This is the reason why we make investments every year in an all-around quality management system; our cooperation with leading international institutes for professional growers is also important to us. The chemical aspects, physical properties and phytosanitary

requirements are under continuous control and give our customers the guarantee for successful growth!

Crops grown using coco growing medium can be cultivated longer. Coir decomposes very slowly; it takes more than 10 years.



**HIGHEST QUALITY COIR PRODUCTS**



**PROFESSIONAL MANAGEMENT**



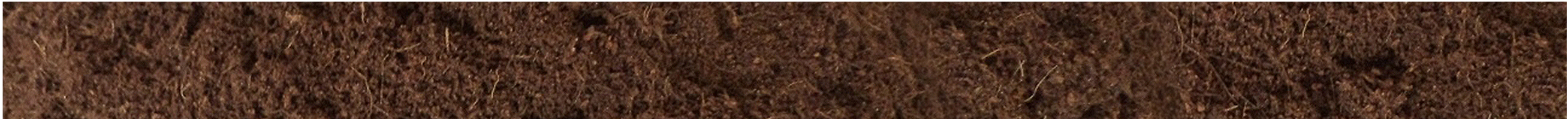
**CONTROL OF PHYSICAL, CHEMICAL & PHYTOSANITARY**





### Sivanthi Coir Pith (Coco Peat)

| Art. No. | Brand Name        | Quality            | Structures |         |         | Packing Unit per Pallet-40' HCC |      |       |        |
|----------|-------------------|--------------------|------------|---------|---------|---------------------------------|------|-------|--------|
|          |                   |                    | 0-6 mm     | 0-10 mm | 0-12 mm | 5 kg                            | 50 L | 200 L | 6000 L |
| 111      | Sivanthi Premium  | Buffered / Treated | X          | X       | X       | 220                             | 90   | 25    | 1      |
| 112      | Sivanthi Bio      | Bio-Buffered       | X          | X       | X       | 220                             | 90   | 25    | 1      |
| 113      | Sivanthi Organic  | Organic/Processsed | X          | X       | X       | 220                             | 90   | 25    | 1      |
| 114      | Sivanthi Plus     | Low pH Stabilised  | X          | X       | X       | 220                             | 90   | 25    | 1      |
| 115      | Sivanthi Standard | Washed/Double      | X          | X       | X       | 220                             | 90   | 25    | 1      |
| 116      | Sivanthi Natural  | Natural/Unwashed   | X          | X       | X       | 220                             | 90   | 25    | 1      |



### Sivanthi Crushed Coir (Coco Crushed)

| Art. No. | Brand Name        | Quality          | Structures |         |         | Packing Unit per Pallet-40' HCC |      |       |        |
|----------|-------------------|------------------|------------|---------|---------|---------------------------------|------|-------|--------|
|          |                   |                  | 0-10 mm    | 0-20 mm | 0-30 mm | 5 kg                            | 50 L | 200 L | 5000 L |
| 121      | Sivanthi Premium  | Buffered/Treated | X          | X       | X       | 180                             | 75   | 25    | 1      |
| 125      | Sivanthi Standard | Washed/Double    | X          | X       | X       | 180                             | 75   | 25    | 1      |
| 126      | Sivanthi Natural  | Natural/Unwashed | X          | X       | X       | 180                             | 75   | 25    | 1      |



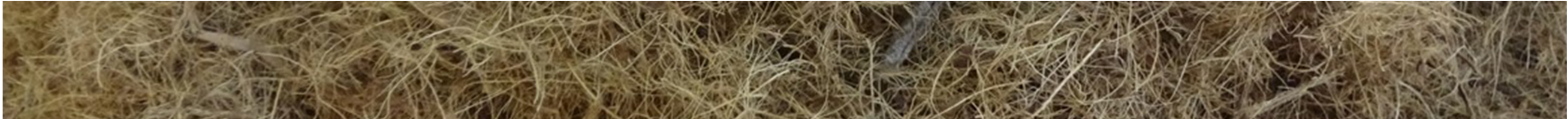
### Sivanthi Coir Chips (Coco Chips)

| Art. No. | Brand Name        | Quality          | Structures |         | Packing Unit per Pallet-40' HCC |      |       |        |
|----------|-------------------|------------------|------------|---------|---------------------------------|------|-------|--------|
|          |                   |                  | 0-12 mm    | 0-25 mm | 5 kg                            | 50 L | 200 L | 5000 L |
| 131      | Sivanthi Premium  | Buffered/Treated | X          | X       | 180                             | 75   | 25    | 1      |
| 135      | Sivanthi Standard | Washed/Double    | X          | X       | 180                             | 75   | 25    | 1      |
| 136      | Sivanthi Natural  | Natural/Unwashed | X          | X       | 180                             | 75   | 25    | 1      |



### Sivanthi Coir Fibre (Coco Fibre)

| Art. No. | Brand Name        | Quality          | Structures |         |         | Packing Unit per Pallet-40' HCC |      |       |        |
|----------|-------------------|------------------|------------|---------|---------|---------------------------------|------|-------|--------|
|          |                   |                  | 0-10 mm    | 0-20 mm | 0-30 mm | 5 kg                            | 50 L | 43 kg | 5000 L |
| 141      | Sivanthi Premium  | Buffered/Treated | X          | X       | X       | 160                             | 75   | 13    | 1      |
| 145      | Sivanthi Standard | Washed/Double    | X          | X       | X       | 160                             | 75   | 13    | 1      |
| 146      | Sivanthi Natural  | Natural/Unwashed | X          | X       | X       | 160                             | 75   | 13    | 1      |





200 ha of production area with 500,000 m<sup>3</sup> Production Capacity



Milling systems separate coir pith and fibre.



The coir pith storage and aging process.



Coir processing and treating.



Highly compressed planks and grow bags machines.

## Sivanthi Coir - Chemical Properties

| Chemical Parameters | Coco Peat/Coco Crushed Coco Chips |                  |                     | Coco Fibre         |                  |                     |
|---------------------|-----------------------------------|------------------|---------------------|--------------------|------------------|---------------------|
|                     | Dutch 1:1, 5 vol.*                | German VD Lufa** | European 1:5 vol*** | Dutch 1:1, 5 vol.* | German VD Lufa** | European 1:5 vol*** |
| pH value            | 5.5-6.8                           | 4.5-6.0          | 5.5-6.9             | 5.5-6.8            | 4.5-6.0          | 5.5-6.9             |
| EC/salt             | <1.0 mS/cm                        | <0.5 g/l         | <23 mS/m            | <1.0 mS/cm         | <0.3 g/l         | <12 mS/m            |
| Sodium(Na)          | <1.5                              | <75              | <70                 | <1.5               | <25              | <70                 |
| Chloride(Cl)        | <2.5                              | <150             | <150                | <1.5               | <75              | <100                |
| Nitrogen (N)        | <2.0                              | <50              | <50                 | <1.0               | <35              | <25                 |
| Phosphorus(P)       | <0.10                             | <20              | <5                  | <0.10              | <15              | <5                  |
| Potassium(K)        | <0.5                              | <200             | <40                 | <0.5               | <75              | <40                 |

\*the elements are expressed in mmol per litre extract. pH in H<sub>2</sub>O - **Sivanthi method**

\*\*the elements are expressed in mg per litre material; phosphorus in P<sub>2</sub>O<sub>5</sub>, potassium in K<sub>2</sub>O. pH in CaCl<sub>2</sub>

\*\*\*the elements are expressed in mg per litre material. pH in H<sub>2</sub>O

## Sivanthi Coir - Physical Properties

|                      | Coco Peat | Coco Crushed | Coco Chips | Coco Fibre |
|----------------------|-----------|--------------|------------|------------|
| Dry bulk density g/l | 80 - 90   | 70 - 80      | 80 - 90    | 60 - 70    |
| Buffer capacity      | +++       | ++           | +++        | +          |
| Water capacity       | +++       | ++           | ++         | +          |
| Capillarity          | +++       | ++           | +++        | +          |
| Water retention      | +++       | ++           | +++        | +          |
| Water uptake         | +++       | ++           | ++         | +          |
| Air capacity         | ++        | ++           | +++        | +++        |
| Biological stability | +++       | +++          | +++        | +++        |
| Bio degradable       | +++       | +++          | +++        | +++        |
| Available resources  | +++       | +++          | +++        | +++        |
| Sustainability       | +++       | +++          | +++        | +++        |

**Guarantees customers for continuous delivery of consistent high quality coir products.**





### Sivanthi Growing Media Products with Fertiliser

| Art. No. | Brand Name            | Substrate Products               | Quality      | Structures |         |         | Packing Unit in Pallet-40' HCC |       |        |
|----------|-----------------------|----------------------------------|--------------|------------|---------|---------|--------------------------------|-------|--------|
|          |                       |                                  |              | 0-6 mm     | 0-20 mm | 0-30 mm | 50 L                           | 200 L | 6000 L |
| 211      | Sivanthi Propagation  | Propagation/Germination/Tray mix | Buffered-Max | x          |         |         | 90                             | 25    | 1      |
| 212      | Sivanthi Vegetables   | Vegateable and Fruit Mix         | Buffered-Max |            |         | x       | 90                             | 25    | 1      |
| 213      | Sivanthi Flowers      | Ornamentals & Flower Mix         | Buffered-Max |            | x       | x       | 75                             | 25    | 1      |
| 214      | Sivanthi Orchid       | Special Orchid Mix               | Buffered-Max |            |         | x       | 75                             | 25    | 1      |
| 215      | Sivanthi Potting Soil | Potting Soil Mix-Pot plants      | Buffered-Max |            | x       |         | 90                             | 25    | 1      |
| 216      | Sivanthi Paddy        | Paddy (Rice) Mix                 | Buffered-Max | x          |         |         | 90                             | 25    | 1      |
| 217      | Sivanthi Special      | Sphagnum Peat-Coco mix           | Buffered-Max | x          | x       | x       | 90                             | 25    | 1      |
| 218      | Sivanthi Air          | Coco-Perlite Mix                 | Buffered-Max | x          | x       | x       | 90                             | 25    | 1      |

### Sivanthi Hydroponic Products

| Art. No. | Brand Name         | Hydroponic Culture                        | Quality      | Sizes              | Structures |         | Packing Unit in Pallet-40' HCC |
|----------|--------------------|---|--------------|--------------------|------------|---------|--------------------------------|
|          |                    |   |              |                    | 0-6 mm     | 0-25 mm |                                |
| 311      | Sivanthi Planks    | Naked Planks for Troughs/ Hanging Gutters | Buffered     | Various            | x          | x       | Various                        |
| 312      | Sivanthi Grow bags | Grow Bags in LDPE UV Film                 | Buffered     | Various            | x          | x       | Various                        |
| 313      | Sivanthi Quickfill | Open top Bags for one or two plants       | Buffered     | 240 x 200 x 160 mm | x          | x       | 1014                           |
| 314      | Sivanthi Cube      | Coco Cube for young Plants                | Buffered     | Various            | x          | x       | Various                        |
| 411      | Sivanthi Pot       | Coco Paper Plugs with fertilised          | Buffered-Max | 15 mm x 40 mm      | x          | NA      | 208896                         |
| 412      | Sivanthi Pot       | Coco Paper Plugs with fertilised          | Buffered-Max | 25 mm x 40 mm      | x          | NA      | 81600                          |
| 413      | Sivanthi Pot       | Coco Paper Plugs with fertilised          | Buffered-Max | 40 mm x 60 mm      | x          | NA      | 26656                          |
| 414      | Sivanthi Pot       | Coco Paper Plugs with fertilised          | Buffered-Max | 50 mm x 70 mm      | x          | NA      | 12000                          |

### Sivanthi Consumer Products

| Art. No. | Brand Name       | Hobby Products             | Quality      | Size | Structures |         | Packing Unit in Pallet-40' HCC |      |      |
|----------|------------------|----------------------------|--------------|------|------------|---------|--------------------------------|------|------|
|          |                  |                            |              | mm   | 0-6 mm     | 0-12 mm | 10 L                           | 30 L | 50 L |
| 511      | Sivanthi Nursery | Coir Special Nursery Mix   | Buffered-Max | NA   | x          |         | 360                            | 150  | 90   |
| 512      | Sivanthi Gro     | Coir Premium Growing media | Buffered     | NA   |            | x       | 360                            | 150  | 90   |



#### SIVANTHI SPECIAL PRODUCTS

- COIR ABSORBENTS FOR ANIMALS
- COIR FILTERS FOR WASTE WATER



**Sivanthi offers a wide range of mixtures with spagnum peat, perlite or other materials with fertiliser, available as standard substrates or as special mixes according to customer's requests.**



Modern mixing line machine



50 L loose bagging machine



6 m<sup>3</sup> (6000 L)-Big Bale machine



200 L Small Bale machine

**Modern mixing & packing lines for loose fill bags 50 L, 200 L bales and 6,000 L big bales guarantee optimal transport and handling.**





COCO COIR BASED GROWING MEDIA & SUBSTRATES



## The future of Growing Media is COIR

Coir as a growing media is increasingly becoming one of the most important resources for the future. Some areas of modern horticulture, such as vegetables, cut flowers, orchids and others, are dominated by coco growing media.

## Logistic advantages

Sivanthi is strategically located in the middle of Asian countries; countries such as Japan, Korea, China, Malaysia, Australia and New Zealand can be reached from the East; the Gulf and African countries can be reached from the West.

Having good mixing equipment as well as efficient bagging/baling machines enable us to produce high-quality substrates and growing media.

Using coir as a main product and having special permission to import peat from Europe in order to perfectly mix substrates upon customers' requests, allowing interested customers to place their own brands on OEM (Original Equipment Manufacturer) model packaging and delivering the goods directly to their customers in the respective countries all enable a more economical way of production,

which thus saves on logistic costs. With this there is also less transporting, which means less expenses for deliveries and considerable savings regarding the carbon footprint.

## Ready to use

It is easy to handle 6,000 L big bales or 200 L bales on pallets. The 1:2 compression ratio and the 50% moisture level make it easy to use directly without having handling costs for rehydration.

## Satisfied customers in over six continents

Coir products from Sivanthi – always a consistent, good quality without cultivation risks.



[www.sivanthijoeecoires.com](http://www.sivanthijoeecoires.com)

Sivanthi Joe Substrates (P) Ltd. 6/107-U, Theri Road, Servaikaranmadam, Tuticorin 628 103.  
Tel. +91 461 22 64-214,-215 / Fax +91 461 22 64-414 / [dunston@sivanthijoeecoires.com](mailto:dunston@sivanthijoeecoires.com)